



2021 CMOM Package 7  
Solicitation Number: CO-00685  
Job No.: 22-4516

ADDENDUM 3  
November 2, 2023

To Bidder of Record:

This addendum, applicable to work referenced above, is an amendment to the bid proposal, plans and specifications and as such will be a part of and included in the Contract Documents. Acknowledge receipt of this addendum by entering the Addendum number and issue date on the space provided in submitted copies of the bid proposal.

**CHANGES TO THE SPECIFICATIONS**

1. **INVITATION TO BIDDERS.** The last two (2) paragraphs of the Invitation to Bidders are hereby deleted in their entirety and replaced with the following:

**“Due to the COVID-19 emergency and to protect the health of the public, SAWS is implementing new procedures for the submission of bids. Bids will be received either Electronically or through Sealed bids, until 10:00 AM (CDT), November 9, 2023. Electronic bids will be received via the secure SAWS FTP site. Sealed bids will be received by Contract Administration, 2800 U.S. Hwy 281 North, Tower II, Customer Center Building, via a drop box located on the left wall when walking through the first set of double glass doors of the main Tower II entry on the north side of the building, San Antonio, Texas 78212. See the Electronic Bid Opening Instructions attachment for additional information regarding an electronic bid submittal. Electronic bids shall be accompanied by a bid bond in an amount not less than five percent of the total bid price. (Or, if providing SAWS with a cashier's check or certified check in an amount not less than five percent of the total bid price, SAWS will request this within 24 hours from the apparent low bidder. Sealed bids must be accompanied by a cashier's check, certified check, or bid bond in an amount not less than five percent of the total bid price. Bids will then be publicly opened and read aloud by Contract Administration via WebEx.**

If Bidders intend to submit bids electronically, Bidders will need to submit a request by **November 8, 2023 10:00 AM (CDT)** to receive access to the File Transfer Protocol (FTP) site via email to **Janie.Powell@saws.org**. Bidder's email requesting access to the FTP site shall provide the legal name of Bidder's company and the intended recipient's email address and phone number. No requests for FTP site access will be accepted after **November 8, 2023 10:00 AM (CDT).**”

2. **ELECTRONIC BID OPENING INSTRUCTIONS.** The title section and first two (2) paragraphs of the Electronic Bid Opening Instruction section are deleted in their entirety and modified to read as follows:

**ELECTRONIC BID OPENING INSTRUCTIONS**  
**November 9, 2023, 10:00 AM (CDT)**

In order to receive electronic bids for this project, SAWS will utilize a SAWS secured File Transfer Protocol (FTP) site. Only Bidders bidding as Prime Contractors will need to submit their request prior to **November 8, 2023 10:00 AM (CDT)** to receive access to the FTP site via email to **Janie.Powell@saws.org**. Bidder's email shall provide the legal name of the Bidder's company and the intended recipient's email address and phone number. No requests for FTP site access will be accepted after **November 8, 2023, 10:00 AM (CDT)**. Once a Bidder is approved for access, an

email with a hyperlink to the FTP site and a unique password for the Bidder will be provided to the Bidder's email recipient.

Once access is received, Bidders may upload the required documents per the Bid Proposal checklist any time before **November 8, 2023, 10:00 AM (CDT)**. Please ensure to allow sufficient time should Bidder's experience technical difficulties in uploading the required documents. No changes to the Bid nor bid price can be made once the Bid has been submitted."

3. Bid Proposal, BP-1 to BP-5 – Remove in its entirety and replace with the revised version attached to this Addendum. Respondents shall utilize the attached Bid Proposal when submitting a bid for this project. Failure to use the revised bid proposal may result in the bid being found non-responsive and rejected. The revised Bid Proposal updates Bid Item #113 "Rehabilitation of Sanitary Sewer by Cured-In-Place Pipe (Hot Water) – 8" (All Depths)" and Bid Item #116 "Rehabilitation of Sanitary Sewer by Cured-In-Place Pipe (Hot Water) – 15" (All Depths)".

**CHANGES TO THE PLANS**


1. Remove the following sheets dated 10/20/2023 in their entirety and replace with the attached sheets dated 11/2/2023:
  - a. Sheet 006 OVERALL QUANTITIES
    - Update quantity total of Bid Item #113 "Rehabilitation of Sanitary Sewer by Cured-In-Place Pipe (Hot Water) – 8" (All Depths)" to 15,372 LF.
    - Update quantity total of Bid Item #116 "Rehabilitation of Sanitary Sewer by Cured-In-Place Pipe (Hot Water) – 15" (All Depths)" to 2,494 LF.
  - b. Sheet 079 SITE 22 CMPKY 989698 STA 10+00 - 14+78 CIPP RHB
    - Modify Estimated Quantities Table Spec 901 to "Rehabilitation of Sanitary Sewer by Cured-In-Place Pipe (Hot Water) – 15" (All Depths)".


**END OF ADDENDUM**

This Addendum, including these two (2) pages, is ten (10) pages with attachments in its entirety.

Attachments:

- 1 – Revised Bid Proposal (6 pages total)
- 2 – Revised Plan Sheets (2 pages total)

  
\_\_\_\_\_  
Ian Toohey, P.E.  
Garver

11/1/2023  


Project Name: 2021CMOM Package 7  
Solicitation No. :CO-00685  
Job No: 22-4516

BID PROPOSAL

PROPOSAL OF \_\_\_\_\_, a corporation  
a partnership consisting of \_\_\_\_\_  
an individual doing business as \_\_\_\_\_

THE SAN ANTONIO WATER SYSTEM:

Pursuant to Instructions and Invitation to Bidders, the undersigned proposes to furnish all labor and materials as specified and perform the work required for the project as specified, in accordance with the Plans and Specifications for the following prices in the bid proposal to wit:

**PLEASE SEE ATTACHED LIST OF BID ITEMS.**

\_\_\_\_\_  
BIDDER'S SIGNATURE & TITLE

\_\_\_\_\_  
FIRM'S NAME (TYPE OR PRINT)

\_\_\_\_\_  
FIRM'S ADDRESS

\_\_\_\_\_  
FIRM'S PHONE NO. /FAX NO.

\_\_\_\_\_  
FIRM'S EMAIL ADDRESS

The Contractor herein acknowledges receipt of the following: **Addendum No(s)**. \_\_\_\_\_

**OWNER RESERVES THE RIGHT TO ACCEPT THE OVERALL MOST RESPONSIBLE BID.**

The Bidder offers to construct the Project in accordance with the Contract Documents for the contract price, and to complete the Project within **392** calendar days after the start date, as set forth in the Authorization to Proceed. **The bidder understands and accepts the provisions of the contract Documents relating to liquidated damages of the project if not completed on time.**

Complete the additional requirements of the Bid Proposal which are included on the following pages.

**Statement on President's Executive Orders**

Has your firm previously performed work subject to the President's Executive Orders Numbers 11246 and 11375 or any preceding similar executive orders (Numbers 10925 and 11114)? Yes  No

**Texas Government Code Chapter 2274 Verifications**

- (1) Are you, Contractor, held or controlled by individuals who are citizens of China, Iran, North Korea, Russia or a country designated by the Governor of the State of Texas pursuant to Texas Government Code Chapter 2274? Yes  No
- (2) Are you, Contractor, held or controlled by a company or other entity, including a governmental entity, that is owned or controlled by citizens of or directly controlled by the government of China, Iran, North Korea, Russia or a country designated by the Governor of the State of Texas pursuant to Texas Government Code Chapter 2274? Yes  No
- (3) Are you, Contractor, headquartered in China, Iran, North Korea, Russia or a country designated by the Governor of the State of Texas pursuant to Texas Government Code Chapter 2274? Yes  No

ITEM NO	SPEC NO	DESCRIPTION	UNIT	EST. QUANTITY	UNIT PRICE	AMOUNT
1	103	Remove Concrete Curb (COSA Spec)	LF	140		
2	103	Remove Concrete Sidewalks & Driveways (COSA Spec)	SF	2367		
3	103.4	Remove Miscellaneous Concrete (COSA Spec)	SF	170		
4	202	Prime Coat (COSA Spec)	GAL	193		
5	203	Tack Coat (COSA Spec)	GAL	1008		
6	205.2	Hot Mix Asphaltic Pavement, Type B (10" Comp. Depth) (COSA Spec)	SY	592		
7	205.2	Hot Mix Asphaltic Pavement, Type B (12" Comp. Depth) (COSA Spec)	SY	4		
8	205.3	Hot Mix Asphaltic Pavement, Type C (3" Comp. Depth) (COSA Spec)	SY	2647		
9	205.4	Hot Mix Asphaltic Pavement, Type D (2" Comp. Depth) (COSA Spec)	SY	7340		
10	208	Salvaging, Hauling & Stockpiling Reclaimable Asphaltic Pavement (2" Depth)	SY	7038		
11	208	Salvaging, Hauling & Stockpiling Reclaimable Asphaltic Pavement (3" Depth)	SY	2642		
12	413.2	Flowable Fill (High Strength)	CY	15		
13	500	Concrete Curb and Gutter (COSA Spec)	LF	256		
14	502	Concrete Sidewalk (COSA Spec)	SY	159		
15	503.1	Portland Cement Concrete Driveway (COSA Spec)	SY	241		
16	505.1	Concrete Riprap (COSA Spec)	SY	31		
17	506.1	Concrete Retaining Walls - Combination Type (COSA Spec)	CY	7		
18	530.7	Barricades, Signs, And Traffic Handling, (COSA Spec) Site 1	LS	1		
19	530.7	Barricades, Signs, And Traffic Handling, (COSA Spec) Site 2	LS	1		
20	530.7	Barricades, Signs, And Traffic Handling, (COSA Spec) Site 3	LS	1		
21	530.7	Barricades, Signs, And Traffic Handling, (COSA Spec) Site 4	LS	1		
22	530.7	Barricades, Signs, And Traffic Handling, (COSA Spec) Site 5	LS	1		
23	530.7	Barricades, Signs, And Traffic Handling, (COSA Spec) Site 6	LS	1		
24	530.7	Barricades, Signs, And Traffic Handling, (COSA Spec) Site 7	LS	1		
25	530.7	Barricades, Signs, And Traffic Handling, (COSA Spec) Site 8	LS	1		
26	530.7	Barricades, Signs, And Traffic Handling, (COSA Spec) Site 9	LS	1		
27	530.7	Barricades, Signs, And Traffic Handling, (COSA Spec) Site 10	LS	1		
28	530.7	Barricades, Signs, And Traffic Handling, (COSA Spec) Site 11	LS	1		
29	530.7	Barricades, Signs, And Traffic Handling, (COSA Spec) Site 12	LS	1		
30	530.7	Barricades, Signs, And Traffic Handling, (COSA Spec) Site 14	LS	1		
31	530.7	Barricades, Signs, And Traffic Handling, (COSA Spec) Site 15	LS	1		

ITEM NO	SPEC NO	DESCRIPTION	UNIT	EST. QUANTITY	UNIT PRICE	AMOUNT
32	530.7	Barricades, Signs, And Traffic Handling, (COSA Spec) Site 16	LS	1		
33	530.7	Barricades, Signs, And Traffic Handling, (COSA Spec) Site 17	LS	1		
34	530.7	Barricades, Signs, And Traffic Handling, (COSA Spec) Site 18	LS	1		
35	530.7	Barricades, Signs, And Traffic Handling, (COSA Spec) Site 20	LS	1		
36	530.7	Barricades, Signs, And Traffic Handling, (COSA Spec) Site 21	LS	1		
37	530.7	Barricades, Signs, And Traffic Handling, (COSA Spec) Site 22	LS	1		
38	530.7	Barricades, Signs, And Traffic Handling, (COSA Spec) Site 23	LS	1		
39	530.7	Barricades, Signs, And Traffic Handling, (COSA Spec) Site 24	LS	1		
40	530.7	Barricades, Signs, And Traffic Handling, (COSA Spec) Site 25	LS	1		
41	530.7	Barricades, Signs, And Traffic Handling, (COSA Spec) Site 26	LS	1		
42	530.7	Barricades, Signs, And Traffic Handling, (COSA Spec) Site 27	LS	1		
43	530.7	Barricades, Signs, And Traffic Handling, (COSA Spec) Site 28	LS	1		
44	530.7	Barricades, Signs, And Traffic Handling, (COSA Spec) Site 29	LS	1		
45	530.7	Barricades, Signs, And Traffic Handling, (COSA Spec) Site 30	LS	1		
46	530.7	Barricades, Signs, And Traffic Handling, (COSA Spec) Site 33	LS	1		
47	530.7	Barricades, Signs, And Traffic Handling, (COSA Spec) Site 35	LS	1		
48	530.7	Barricades, Signs, And Traffic Handling, (COSA Spec) Site 36	LS	1		
49	530.7	Barricades, Signs, And Traffic Handling, (COSA Spec) Site 37	LS	1		
50	530.7	Barricades, Signs, And Traffic Handling, (COSA Spec) Site 38	LS	1		
51	531	Sidewalks (TxDOT Spec)	SY	10		
52	535.1	4-Inch Wide Yellow Line (COSA Spec)	LF	3966		
53	535.2	4-Inch Wide White Line (COSA Spec)	LF	239		
54	535.7	24-Inch Wide White Line (COSA Spec)	LF	560		
55	536.22	12-Inch Wide Black Line (Contrast) (COSA Spec)	LF	1120		
56	537.6	Traffic Button (Type I-C)	EA	57		
57	537.8	Traffic Button (Type II-A-A)	EA	107		
58	539.5	12-Inch Wide White Line (COSA Spec)	LF	820		
59	550	Trench Excavation Safety Protection	LF	124		
60	848	8" PVC SDR-26 (160 psi) Sewer Line	LF	124		
61	851	Manhole Adjustment	EA	58		
62	852	External Drop Connection	EA	1		

ITEM NO	SPEC NO	DESCRIPTION	UNIT	EST. QUANTITY	UNIT PRICE	AMOUNT
63	852	Sanitary Sewer Drop Manhole 4' Dia. (0'-6')	EA	1		
64	852	Extra Depth Manhole (>6')	VF	53		
65	854	One-way Sanitary Sewer Clean-Out	EA	2		
66	852	Sanitary Sewer Manhole 4' Dia. (0'-6')	EA	13		
67	854	Two-way Sanitary Sewer Clean-Out	EA	103		
68	854	Sanitary Sewer Lateral	LF	2223		
69	855	Reconstruction of Existing 4' Dia. Manhole	EA	12		
70	860	Vertical Stacks	VF	169		
71	862	Abandonment of Sanitary Sewer Manholes	EA	1		
72	862	Abandonment of Sanitary Sewer Main (All Sizes)	LF	124		
73	864	Bypass Pumping Large Diameter Sanitary Sewer Mains, (>24") Site 16	LS	1		
74	864	Bypass Pumping Large Diameter Sanitary Sewer Mains, (>24") Site 33	LS	1		
75	865	Bypass Pumping Small Diameter Sanitary Sewer, (<24") Site 1	LS	1		
76	865	Bypass Pumping Small Diameter Sanitary Sewer, (<24") Site 2	LS	1		
77	865	Bypass Pumping Small Diameter Sanitary Sewer, (<24") Site 3	LS	1		
78	865	Bypass Pumping Small Diameter Sanitary Sewer, (<24") Site 4	LS	1		
79	865	Bypass Pumping Small Diameter Sanitary Sewer, (<24") Site 5	LS	1		
80	865	Bypass Pumping Small Diameter Sanitary Sewer, (<24") Site 6	LS	1		
81	865	Bypass Pumping Small Diameter Sanitary Sewer, (<24") Site 7	LS	1		
82	865	Bypass Pumping Small Diameter Sanitary Sewer, (<24") Site 8	LS	1		
83	865	Bypass Pumping Small Diameter Sanitary Sewer, (<24") Site 9	LS	1		
84	865	Bypass Pumping Small Diameter Sanitary Sewer, (<24") Site 10	LS	1		
85	865	Bypass Pumping Small Diameter Sanitary Sewer, (<24") Site 11	LS	1		
86	865	Bypass Pumping Small Diameter Sanitary Sewer, (<24") Site 12	LS	1		
87	865	Bypass Pumping Small Diameter Sanitary Sewer, (<24") Site 14	LS	1		
88	865	Bypass Pumping Small Diameter Sanitary Sewer, (<24") Site 15	LS	1		
89	865	Bypass Pumping Small Diameter Sanitary Sewer, (<24") Site 16	LS	1		
90	865	Bypass Pumping Small Diameter Sanitary Sewer, (<24") Site 17	LS	1		
91	865	Bypass Pumping Small Diameter Sanitary Sewer, (<24") Site 18	LS	1		
92	865	Bypass Pumping Small Diameter Sanitary Sewer, (<24") Site 20	LS	1		
93	865	Bypass Pumping Small Diameter Sanitary Sewer, (<24") Site 21	LS	1		

ITEM NO	SPEC NO	DESCRIPTION	UNIT	EST. QUANTITY	UNIT PRICE	AMOUNT
94	865	Bypass Pumping Small Diameter Sanitary Sewer, (<24") Site 22	LS	1		
95	865	Bypass Pumping Small Diameter Sanitary Sewer, (<24") Site 23	LS	1		
96	865	Bypass Pumping Small Diameter Sanitary Sewer, (<24") Site 24	LS	1		
97	865	Bypass Pumping Small Diameter Sanitary Sewer, (<24") Site 25	LS	1		
98	865	Bypass Pumping Small Diameter Sanitary Sewer, (<24") Site 26	LS	1		
99	865	Bypass Pumping Small Diameter Sanitary Sewer, (<24") Site 27	LS	1		
100	865	Bypass Pumping Small Diameter Sanitary Sewer, (<24") Site 28	LS	1		
101	865	Bypass Pumping Small Diameter Sanitary Sewer, (<24") Site 29	LS	1		
102	865	Bypass Pumping Small Diameter Sanitary Sewer, (<24") Site 30	LS	1		
103	865	Bypass Pumping Small Diameter Sanitary Sewer, (<24") Site 33	LS	1		
104	865	Bypass Pumping Small Diameter Sanitary Sewer, (<24") Site 35	LS	1		
105	865	Bypass Pumping Small Diameter Sanitary Sewer, (<24") Site 36	LS	1		
106	865	Bypass Pumping Small Diameter Sanitary Sewer, (<24") Site 37	LS	1		
107	865	Bypass Pumping Small Diameter Sanitary Sewer, (<24") Site 38	LS	1		
108	866	Sewer Main Television Inspection (Pre-Construction) (8"-15" Dia.)	LF	19363		
109	866	Sewer Main Television Inspection (Pre-Construction) (18"-24" Dia.)	LF	592		
110	866	Sewer Main Television Inspection (Post-Construction) (8"-15" Dia.)	LF	124		
111	868	Sanitary Sewer Main Cleaning - Heavy (8" - 15")	LF	87		
112	868	Sanitary Sewer Main Cleaning - Mechanical (8" - 15")	LF	87		
113	901	Rehabilitation of Sanitary Sewer by Cured-In-Place Pipe (Hot Water) - 8" (All Depths)	LF	15372		
114	901	Rehabilitation of Sanitary Sewer by Cured-In-Place Pipe (Hot Water) - 10" (All Depths)	LF	1064		
115	901	Rehabilitation of Sanitary Sewer by Cured-In-Place Pipe (Hot Water) - 12" (All Depths)	LF	290		
116	901	Rehabilitation of Sanitary Sewer by Cured-In-Place Pipe (Hot Water) - 15" (All Depths)	LF	2494		
117	901	Rehabilitation of Sanitary Sewer by Cured-In-Place Pipe (Hot Water) - 21" (All Depths)	LF	592		
118	910	Rehabilitation of Existing 4' Dia. Manhole	VF	468		
119	910.2	Sewer Structure Rehabilitation (Non-Circular Manholes, and Manholes > 4' Dia.)	VF	7		
120	1020	Water Main Break/Leak Repairs (6"-16" Dia.), All Types	EA	2		
121	1103	Obstruction Removal - Remote Device	EA	10		
122	1103	Point Repair (0'-9') (all depths)	EA	35		
123	1103	Point Repair, Additional Length > 9' (all depths)	LF	23		
124	1109	Service Reconnections - Remote Cutting Connection	EA	370		

ITEM NO	SPEC NO	DESCRIPTION	UNIT	EST. QUANTITY	UNIT PRICE	AMOUNT
125	SS 1901	Sanitary Sewer Lateral Rehabilitation (Up to 20-ft)	EA	14		
126	SS 2010	Removal and Replacement of Fencing (Chain Link)	LF	66		
127	SS 2010	Removal and Replacement of Fencing (Wood)	LF	20		
128	SS 3300	Sanitary Sewer Private Lateral (4"- 6") (Including COSA Permit and Licensed Plumber)	EA	1		
129	SS 6001	Portable Changeable Message Sign (TxDOT Spec)	EA	28		
Subtotal (Items 1 - 129)						
130	3001	Pole Bracing, All Sites	ALW	1	\$ 72,000	\$ 72,000
131	SC6	Union Pacific Railroad Flaggers	ALW	1	\$ 25,000	\$ 25,000
132	SC6	UPRR Permit Extension Allowance	ALW	1	\$ 10,000	\$ 10,000
133	102.1	Intermediate Demobilization and Remobilization	EA	1		
134	100	Mobilization (Max 10% of Line Items 1-129)	LS	1		
135	101	Preparing Right-of-Way (Max 5% of Line Items 1-129)	LS	1		
Subtotal (Items 131 - 135)						
SUBTOTAL (ITEMS 1-135)						
<p>Mobilization lump sum bid shall be limited to a maximum 10% of the Subtotal (Items 1-129) amount. Preparing Right-of-Way lump sum bid shall be limited to a maximum of 5% of the Subtotal (Items 1-129) amount. The Subtotal (Items 1-129) amount is defined as all bid items EXCLUDING Item 130, 3001, Pole Bracing, All Sites; Item 131, SC6, Union Pacific Railroad Flaggers; Item 132, SC6, UPRR Permit Extension Allowance; Item 133, 102.1, Intermediate Demobilization and Remobilization; Item 134, 100, Mobilization; and Item 135, 101, Preparing Right-of-Way. In the event of a discrepancy between the written percentage and dollar amount shown for Mobilization and Preparation of ROW bid items, the written percentage will govern. <b>If the percentage written exceeds the allowable maximum stated for mobilization and or preparation of ROW, SAWS reserves the right to cap the amount at the percentages shown and adjust the extensions of the bid items accordingly.</b></p>						
<b>TOTAL BID PRICE (TO INCLUDE LINE ITEMS 1-135)</b>					<b>\$</b>	<b>-</b>



ITEM NO	SPEC NO	DESCRIPTION	UNIT	EST. QUANTITY
1	103	Remove Concrete Curb (COSA Spec)	LF	140
2	103	Remove Concrete Sidewalks & Driveways (COSA Spec)	SF	2367
3	103.4	Remove Miscellaneous Concrete (COSA Spec)	SF	170
4	202	Prime Coat (COSA Spec)	GAL	193
5	203	Tack Coat (COSA Spec)	GAL	1008
6	205.2	Hot Mix Asphaltic Pavement, Type B (10" Comp. Depth) (COSA Spec)	SY	592
7	205.2	Hot Mix Asphaltic Pavement, Type B (12" Comp. Depth) (COSA Spec)	SY	4
8	205.3	Hot Mix Asphaltic Pavement, Type C (3" Comp. Depth) (COSA Spec)	SY	2647
9	205.4	Hot Mix Asphaltic Pavement, Type D (2" Comp. Depth) (COSA Spec)	SY	7340
10	208	Salvaging, Hauling & Stockpiling Reclaimable Asphaltic Pavement (2" Depth)	SY	7038
11	208	Salvaging, Hauling & Stockpiling Reclaimable Asphaltic Pavement (3" Depth)	SY	2642
12	413.2	Flowable Fill (High Strength)	CY	15
13	500	Concrete Curb and Gutter (COSA Spec)	LF	256
14	502	Concrete Sidewalk (COSA Spec)	SY	159
15	503.1	Portland Cement Concrete Driveway (COSA Spec)	SY	241
16	505.1	Concrete Riprap (COSA Spec)	SY	31
17	506.1	Concrete Retaining Walls - Combination Type (COSA Spec)	CY	7
18	530.7	Barricades, Signs, And Traffic Handling, (COSA Spec) Site 1	LS	1
19	530.7	Barricades, Signs, And Traffic Handling, (COSA Spec) Site 2	LS	1
20	530.7	Barricades, Signs, And Traffic Handling, (COSA Spec) Site 3	LS	1
21	530.7	Barricades, Signs, And Traffic Handling, (COSA Spec) Site 4	LS	1
22	530.7	Barricades, Signs, And Traffic Handling, (COSA Spec) Site 5	LS	1
23	530.7	Barricades, Signs, And Traffic Handling, (COSA Spec) Site 6	LS	1
24	530.7	Barricades, Signs, And Traffic Handling, (COSA Spec) Site 7	LS	1
25	530.7	Barricades, Signs, And Traffic Handling, (COSA Spec) Site 8	LS	1
26	530.7	Barricades, Signs, And Traffic Handling, (COSA Spec) Site 9	LS	1
27	530.7	Barricades, Signs, And Traffic Handling, (COSA Spec) Site 10	LS	1
28	530.7	Barricades, Signs, And Traffic Handling, (COSA Spec) Site 11	LS	1
29	530.7	Barricades, Signs, And Traffic Handling, (COSA Spec) Site 12	LS	1
30	530.7	Barricades, Signs, And Traffic Handling, (COSA Spec) Site 14	LS	1
31	530.7	Barricades, Signs, And Traffic Handling, (COSA Spec) Site 15	LS	1
32	530.7	Barricades, Signs, And Traffic Handling, (COSA Spec) Site 16	LS	1
33	530.7	Barricades, Signs, And Traffic Handling, (COSA Spec) Site 17	LS	1
34	530.7	Barricades, Signs, And Traffic Handling, (COSA Spec) Site 18	LS	1
35	530.7	Barricades, Signs, And Traffic Handling, (COSA Spec) Site 20	LS	1
36	530.7	Barricades, Signs, And Traffic Handling, (COSA Spec) Site 21	LS	1
37	530.7	Barricades, Signs, And Traffic Handling, (COSA Spec) Site 22	LS	1
38	530.7	Barricades, Signs, And Traffic Handling, (COSA Spec) Site 23	LS	1
39	530.7	Barricades, Signs, And Traffic Handling, (COSA Spec) Site 24	LS	1
40	530.7	Barricades, Signs, And Traffic Handling, (COSA Spec) Site 25	LS	1
41	530.7	Barricades, Signs, And Traffic Handling, (COSA Spec) Site 26	LS	1
42	530.7	Barricades, Signs, And Traffic Handling, (COSA Spec) Site 27	LS	1
43	530.7	Barricades, Signs, And Traffic Handling, (COSA Spec) Site 28	LS	1
44	530.7	Barricades, Signs, And Traffic Handling, (COSA Spec) Site 29	LS	1
45	530.7	Barricades, Signs, And Traffic Handling, (COSA Spec) Site 30	LS	1
46	530.7	Barricades, Signs, And Traffic Handling, (COSA Spec) Site 33	LS	1
47	530.7	Barricades, Signs, And Traffic Handling, (COSA Spec) Site 35	LS	1
48	530.7	Barricades, Signs, And Traffic Handling, (COSA Spec) Site 36	LS	1
49	530.7	Barricades, Signs, And Traffic Handling, (COSA Spec) Site 37	LS	1
50	530.7	Barricades, Signs, And Traffic Handling, (COSA Spec) Site 38	LS	1
51	531	Sidewalks (TxDOT Spec)	SY	10
52	535.1	4-Inch Wide Yellow Line (COSA Spec)	LF	3966
53	535.2	4-Inch Wide White Line (COSA Spec)	LF	239
54	535.7	24-Inch Wide White Line (COSA Spec)	LF	560
55	536.22	12-Inch Wide Black Line (Contrast) (COSA Spec)	LF	1120
56	537.6	Traffic Button (Type I-C)	EA	57
57	537.8	Traffic Button (Type II-A-A)	EA	107
58	539.5	12-Inch Wide White Line (COSA Spec)	LF	820
59	550	Trench Excavation Safety Protection	LF	124
60	848	8" PVC SDR-26 (160 psi) Sewer Line	LF	124
61	851	Manhole Adjustment	EA	58
62	852	External Drop Connection	EA	1
63	852	Sanitary Sewer Drop Manhole 4' Dia. (0'-6')	EA	1
64	852	Extra Depth Manhole (>6')	VF	53
65	854	One-way Sanitary Sewer Clean-Out	EA	2
66	852	Sanitary Sewer Manhole 4' Dia. (0'-6')	EA	13
67	854	Two-way Sanitary Sewer Clean-Out	EA	103
68	854	Sanitary Sewer Lateral	LF	2223
69	855	Reconstruction of Existing 4' Dia. Manhole	EA	12
70	860	Vertical Stacks	VF	169

ITEM NO	SPEC NO	DESCRIPTION	UNIT	EST. QUANTITY
71	862	Abandonment of Sanitary Sewer Manholes	EA	1
72	862	Abandonment of Sanitary Sewer Main (All Sizes)	LF	124
73	864	Bypass Pumping Large Diameter Sanitary Sewer Mains, (>24") Site 16	LS	1
74	864	Bypass Pumping Large Diameter Sanitary Sewer Mains, (>24") Site 33	LS	1
75	865	Bypass Pumping Small Diameter Sanitary Sewer, (<24") Site 1	LS	1
76	865	Bypass Pumping Small Diameter Sanitary Sewer, (<24") Site 2	LS	1
77	865	Bypass Pumping Small Diameter Sanitary Sewer, (<24") Site 3	LS	1
78	865	Bypass Pumping Small Diameter Sanitary Sewer, (<24") Site 4	LS	1
79	865	Bypass Pumping Small Diameter Sanitary Sewer, (<24") Site 5	LS	1
80	865	Bypass Pumping Small Diameter Sanitary Sewer, (<24") Site 6	LS	1
81	865	Bypass Pumping Small Diameter Sanitary Sewer, (<24") Site 7	LS	1
82	865	Bypass Pumping Small Diameter Sanitary Sewer, (<24") Site 8	LS	1
83	865	Bypass Pumping Small Diameter Sanitary Sewer, (<24") Site 9	LS	1
84	865	Bypass Pumping Small Diameter Sanitary Sewer, (<24") Site 10	LS	1
85	865	Bypass Pumping Small Diameter Sanitary Sewer, (<24") Site 11	LS	1
86	865	Bypass Pumping Small Diameter Sanitary Sewer, (<24") Site 12	LS	1
87	865	Bypass Pumping Small Diameter Sanitary Sewer, (<24") Site 14	LS	1
88	865	Bypass Pumping Small Diameter Sanitary Sewer, (<24") Site 15	LS	1
89	865	Bypass Pumping Small Diameter Sanitary Sewer, (<24") Site 16	LS	1
90	865	Bypass Pumping Small Diameter Sanitary Sewer, (<24") Site 17	LS	1
91	865	Bypass Pumping Small Diameter Sanitary Sewer, (<24") Site 18	LS	1
92	865	Bypass Pumping Small Diameter Sanitary Sewer, (<24") Site 20	LS	1
93	865	Bypass Pumping Small Diameter Sanitary Sewer, (<24") Site 21	LS	1
94	865	Bypass Pumping Small Diameter Sanitary Sewer, (<24") Site 22	LS	1
95	865	Bypass Pumping Small Diameter Sanitary Sewer, (<24") Site 23	LS	1
96	865	Bypass Pumping Small Diameter Sanitary Sewer, (<24") Site 24	LS	1
97	865	Bypass Pumping Small Diameter Sanitary Sewer, (<24") Site 25	LS	1
98	865	Bypass Pumping Small Diameter Sanitary Sewer, (<24") Site 26	LS	1
99	865	Bypass Pumping Small Diameter Sanitary Sewer, (<24") Site 27	LS	1
100	865	Bypass Pumping Small Diameter Sanitary Sewer, (<24") Site 28	LS	1
101	865	Bypass Pumping Small Diameter Sanitary Sewer, (<24") Site 29	LS	1
102	865	Bypass Pumping Small Diameter Sanitary Sewer, (<24") Site 30	LS	1
103	865	Bypass Pumping Small Diameter Sanitary Sewer, (<24") Site 33	LS	1
104	865	Bypass Pumping Small Diameter Sanitary Sewer, (<24") Site 35	LS	1
105	865	Bypass Pumping Small Diameter Sanitary Sewer, (<24") Site 36	LS	1
106	865	Bypass Pumping Small Diameter Sanitary Sewer, (<24") Site 37	LS	1
107	865	Bypass Pumping Small Diameter Sanitary Sewer, (<24") Site 38	LS	1
108	866	Sewer Main Television Inspection (Pre-Construction) (8"-15" Dia.)	LF	19363
109	866	Sewer Main Television Inspection (Pre-Construction) (18"-24" Dia.)	LF	592
110	866	Sewer Main Television Inspection (Post-Construction) (8"-15" Dia.)	LF	124
111	868	Sanitary Sewer Main Cleaning - Heavy (8" - 15")	LF	87
112	868	Sanitary Sewer Main Cleaning - Mechanical (8" - 15")	LF	87
113	901	Rehabilitation of Sanitary Sewer by Cured-In-Place Pipe (Hot Water) - 8" (All Depths)	LF	15372
114	901	Rehabilitation of Sanitary Sewer by Cured-In-Place Pipe (Hot Water) - 10" (All Depths)	LF	1064
115	901	Rehabilitation of Sanitary Sewer by Cured-In-Place Pipe (Hot Water) - 12" (All Depths)	LF	290
116	901	Rehabilitation of Sanitary Sewer by Cured-In-Place Pipe (Hot Water) - 15" (All Depths)	LF	2494
117	901	Rehabilitation of Sanitary Sewer by Cured-In-Place Pipe (Hot Water) - 21" (All Depths)	LF	592
118	910	Rehabilitation of Existing 4' Dia. Manhole	VF	468
119	910.2	Sewer Structure Rehabilitation (Non-Circular Manholes, and Manholes > 4' Dia.)	VF	7
120	1020	Water Main Break/Leak Repairs (6"-16" Dia.), All Types	EA	2
121	1103	Obstruction Removal - Remote Device	EA	10
122	1103	Point Repair (0'-9') (all depths)	EA	35
123	1103	Point Repair, Additional Length > 9' (all depths)	LF	23
124	1109	Service Reconnections - Remote Cutting Connection	EA	370
125	SS 1901	Sanitary Sewer Lateral Rehabilitation (Up to 20-ft)	EA	14
126	SS 2010	Removal and Replacement of Fencing (Chain Link)	LF	66
127	SS 2010	Removal and Replacement of Fencing (Wood)	LF	20
128	SS 3300	Sanitary Sewer Private Lateral (4" - 6") (Including COSA Permit and Licensed Plumber)	EA	1
129	SS 6001	Portable Changeable Message Sign (TxDOT Spec)	EA	28
130	3001	Pole Bracing, All Sites	ALW	1
131	SC6	Union Pacific Railroad Flaggers	ALW	1
132	SC6	UPRR Permit Extension Allowance	ALW	1
133	102.1	Intermediate Demobilization and Remobilization	EA	1
134	100	Mobilization (Max 10% of Line Items 1-129)	LS	1
135	101	Preparing Right-of-Way (Max 5% of Line Items 1-129)	LS	1



**GARVER** Registration No. F-5713  
 13750 San Pedro Avenue  
 Suite 350  
 San Antonio, TX 78232  
 (210) 447-6250

▲	Addendum #2	AJD	MML	10/23
▲	Addendum #3	AJD	MML	11/23
No.	Revision	Drawn	Approved	Date

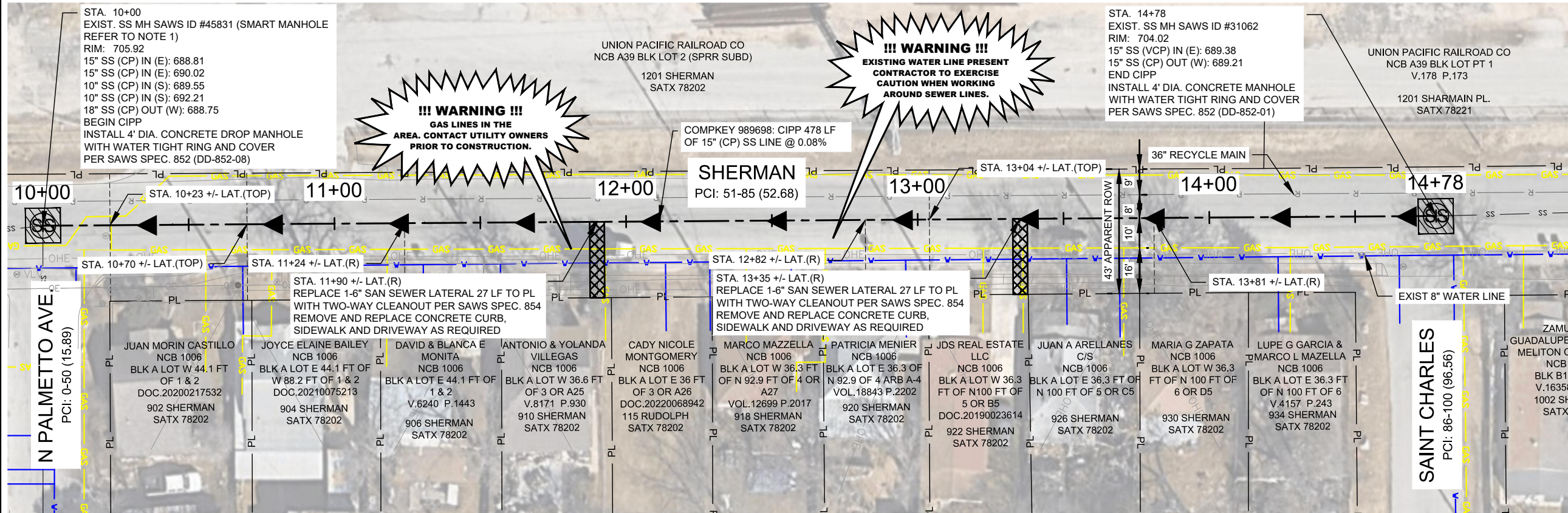
REVISIONS

2021 CMOM PKG 7  
**OVERALL QUANTITIES**

DEVELOPER: SAN-ANTONIO-WATER-SYSTEM  
 CONT. BUDGET PROJ. 00-00-00

SUBMITTED \_\_\_\_\_  
 APPROVED \_\_\_\_\_

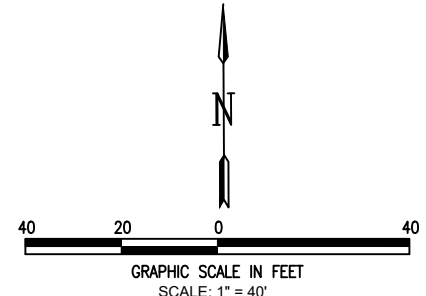
MAP No. 000-000 SHEET  
 SECT. No. 006  
 DR:UOP CK:MML JOB No. 22-4516 OF 145



**PROP. 15" SANITARY SEWER CIPP REHABILITATION SEGMENT (989698) - 478 LF**

1  
079

SCALE: 1" = 40'



**LEGEND**

	PROPOSED LINE & SANITARY SEWER FLOW
	PROPOSED BYPASS LINE
	EXISTING SANITARY SEWER
	WATERLINE
	GAS LINE
	UNDERGROUND ELECTRICAL LINE
	OVERHEAD ELECTRICAL LINE
	OVERHEAD TELEPHONE LINE
	PROPERTY/ROW LINE
	PAVEMENT REPLACEMENT
	POINT REPAIR LIMITS
	100-YEAR FLOODPLAIN
	OBSTRUCTION REMOVAL
	EXISTING SANITARY SEWER MANHOLE
	PROPOSED SANITARY SEWER MANHOLE

SEE SHEET 004 FOR FULL LEGEND

**ESTIMATED QUANTITIES**

Spec	Description	Unit	Value
202	Prime Coat (COSA Spec)	GAL	3
203	Tack Coat (COSA Spec)	GAL	2
205.2	Hot Mix Asphaltic Pavement, Type B (10" Comp. Depth) (COSA Spec)	SY	15
205.4	Hot Mix Asphaltic Pavement, Type D (2" Comp. Depth) (COSA Spec)	SY	15
500	Concrete Curb and Gutter (COSA Spec)	LF	6
502	Concrete Sidewalk (COSA Spec)	SY	4
530.7	Barricades, Signs, And Traffic Handling, (COSA Spec) Site 22	LS	1
852	Sanitary Sewer Manhole 4' Dia. (0'-6")	EA	2
852	Extra Depth Manhole (>6")	VF	32
854	Sanitary Sewer Lateral	LF	54
854	Two-way Sanitary Sewer Clean-Out	EA	2
865	Bypass Pumping Small Diameter Sanitary Sewer, (<24") Site 22	LS	1
866	Sewer Main Television Inspection (Pre-Construction) (8"-15" Dia.)	LF	478
901	Rehabilitation of Sanitary Sewer by Cured-In-Place Pipe (Hot Water) - 15" (All Depths)	LF	478
1109	Service Reconections - Remote Cutting Connection	EA	8

**NOTES:**

1. SMART MANHOLE COVERS: REFER TO SEWER NOTE #28 ON GENERAL NOTES SHEET (2 OF 3)
2. CONTRACTOR TO REFER TO PHASE II ESA REPORT PROVIDED BY SAWS. SOILS GENERATED BY EXCAVATION DOWN TO 5 FEET BELOW REMOVED PAVEMENTS ARE TO BE REUSED BENEFICIALLY ON SITE OR TREATED AND APPROPRIATELY DISPOSED OF AS NON-HAZARDOUS WASTE (NSPI).

**SERVICE LATERALS**

COMPKEY 989698  
 STA. 10+23 (TOP)  
 STA. 10+27 (L) CAPPED  
 STA. 10+70 (TOP)  
 STA. 10+71 (R) CAPPED  
 STA. 11+24 (R)  
 STA. 11+29 (L) CAPPED  
 STA. 11+90 (R) DEFECTIVE  
 STA. 12+20 (R) CAPPED  
 STA. 12+30 (L) CAPPED  
 STA. 12+51 (TOP) CAPPED  
 STA. 12+82 (R)  
 STA. 12+86 (R) CAPPED  
 STA. 13+04 (TOP)  
 STA. 13+10 (L) CAPPED  
 STA. 13+35 (R) DEFECTIVE  
 STA. 13+81 (R)  
 STA. 13+88 (L) CAPPED

NOTE: ALL SERVICES TO BE FIELD VERIFIED. SERVICE LATERAL LOCATIONS ARE PROVIDED FOR INFORMATION PURPOSES ONLY. LATERAL LOCATION IS ORIENTED FROM THE UPSTREAM DIRECTION.

**GARVER** Registration No. F-5713  
 13750 San Pedro Avenue  
 Suite 350  
 San Antonio, TX 78232  
 (210) 447-6250

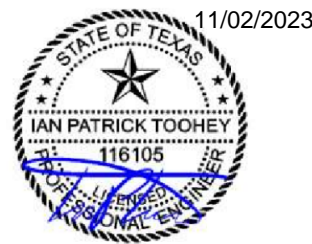
Addendum #2	AJD	MML	10/23
Addendum #3	AJD	MML	11/23
No.	Revision	Drawn	Approved

REVISIONS  
 2021 CMOM PKG 7  
**SITE 22 CMPKY 989698**  
**STA 10+00 - 14+78 CIPP**  
**RHB**

DEVELOPER: SAN-ANTONIO-WATER-SYSTEM  
 CONT. BUDGET PROJ. 00-00-00

SUBMITTED \_\_\_\_\_  
 APPROVED \_\_\_\_\_

MAP No. 000-000 SHEET **079**  
 SECT. No. \_\_\_\_\_  
 DR:UOP CK:MML JOB No. 22-4516 OF 145



File: I:\2021\12\107110 - saws 2021 cmom pkg 7\Drawings\SAWS 05-C321.dwg  
 Last plotted by: De La Cruz, Ashton J. Plot Date: 11/17/2023 4:26 PM